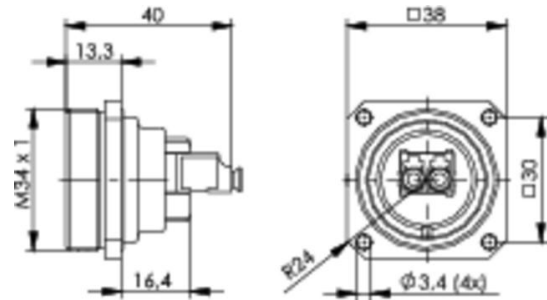
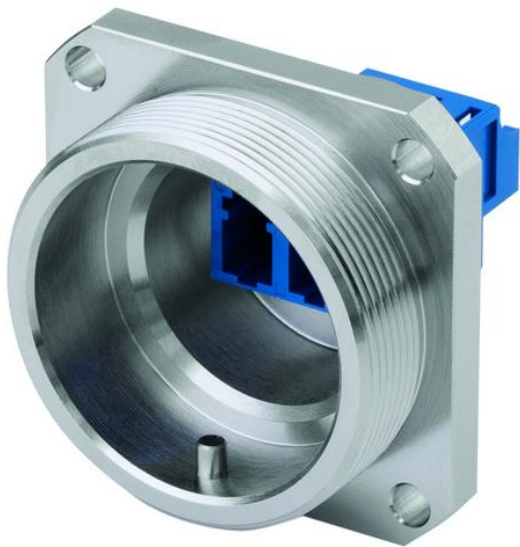


order number: J68071A0001

TOC bulkhead set IP68, LC Duplex adaptor APC Singlemode, nickel-plated brass



Technical Attributes	
Description	TOC Bulkhead Set IP68
Description	LC/APC duplex adaptor, singlemode
Remarks	brass, nickel-plated

### Product description

The TOC series RJ45 coming with the newly available field assembly RJ45 plug MFP8 Cat.6<sub>A</sub> and RJ45 keystone AMJ-S Module Cat.6<sub>A</sub> is available as a set. They can be attached to solid and stranded conductor cables with cable outer diameter max. 9.5 mm on site without the need for any special tools. For line extensions, the TOC Coupler IP68 is your first choice. It can be easily integrated with no negative effects on performance of the connection.

The TOC series with LC Duplex plugs captivates due to its flexibility and ease of installation. Customers can choose whether they work with pre-terminated cables feed into TOC plug housing from the backside or they terminate the LC plugs themselves on site. The enclosed LC holding frame with elongated release latch accepts the LC plugs firmly and offers an additional tool free strain relief. By means of the elongated release latch the LC plugs can be mated & unmated into SFP+ transceivers or LC Duplex adaptors effortlessly even in confined installation environments. In addition, the several installation positions of SFP+ transceivers no longer form a problem as the holding frame incorporating the LC plugs easily adjusts to them. For line extensions, the TOC Coupler IP68 LC Duplex is your first choice. It can be easily integrated with no negative effects on performance of the connection.

## Performance Characteristics

- suitable for 10 Gigabit Ethernet acc. to IEEE 802.3an
- suitable for PoE+ acc. to IEEE 802.3 at
- 360° shielding
- temperature range: -40° to +85°C
- protection class IP68 acc. to IEC 60529
- protection cap with protection class IP68
- plug & adaptor acc. to IEC 61754-20 (zirconia ceramics)
- Singlemode/Multimode (PC) & Singlemode (APC) types
- Insertion Loss: plug Multimode max. 0.4 dB, Singlemode APC max. 0.5 dB
- Return Loss: plug: Multimode min. 30 dB, Singlemode APC min. 60 dB
- 4-hole mounting, mounting cut out Ø 30.5 mm
- optional for SFP+ Transceiver

Mechanical Characteristics	
Durability (mating cycles)	≥ 100
Material: flange housing	brass, 5 µm Ni plated
Material: O-ring	silicone red
Material: adaptor housing	plastic (PEI UL94 V-0)
Material: split sleeve	Zirconia ceramic
Material: dust cap	plastic
Material: bulkhead protective cap IP68	brass, 5 µm Ni plated

Standards	
Generic cabling systems	ISO/IEC 11801, EN 50173-1
Connectors	
Degrees of protection provided by enclosures (IP code)	IEC 60529
Fiber optic interconnection devices and passive components- Basic test and measurement procedures	IEC61300-2-x; IEC61300-3-x

Optical Characteristics	
Reproducibility insertion loss	max. 0.1 dB